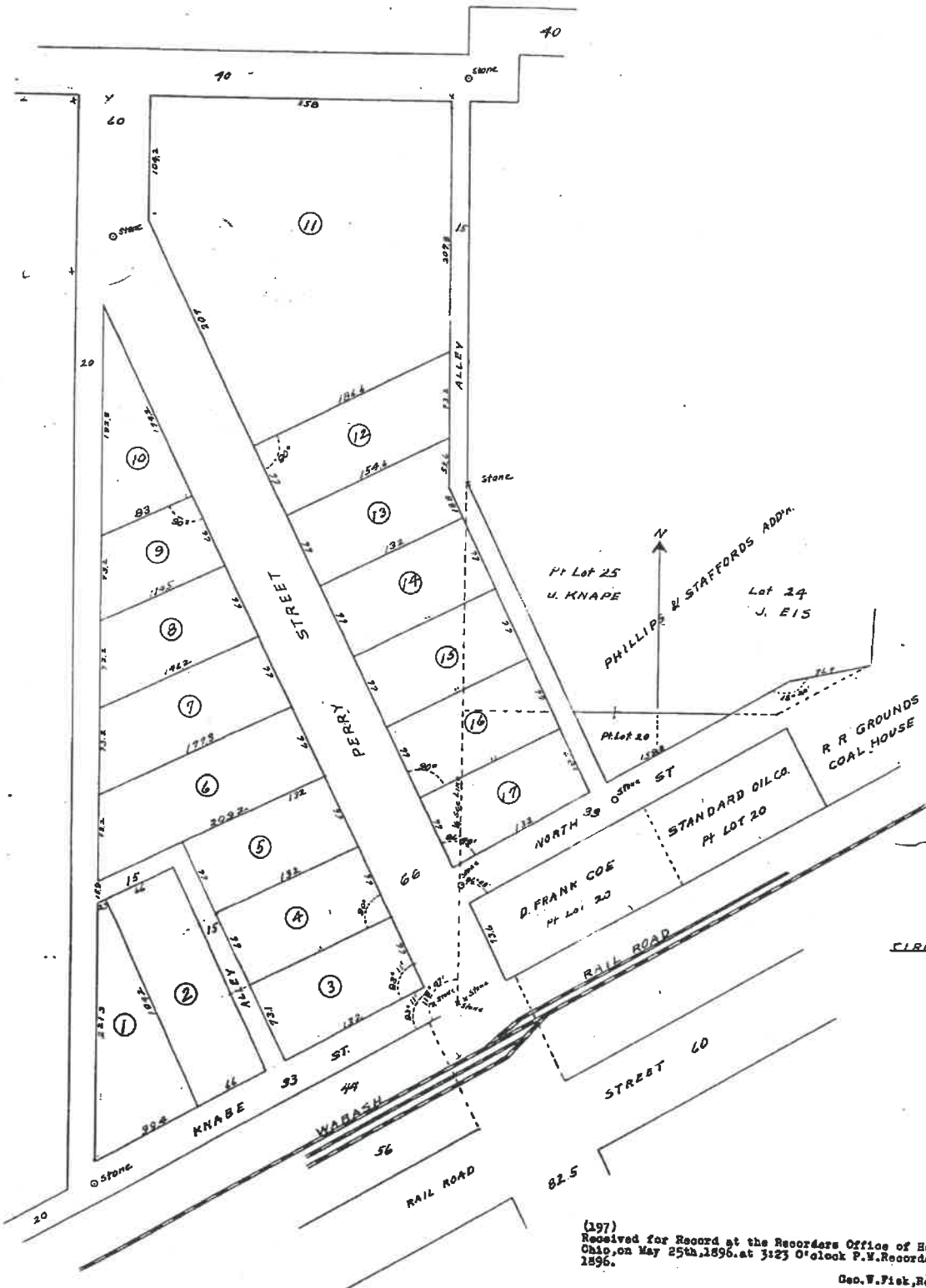


# JOHN KNAPE'S 1<sup>ST</sup> ADD TO NAPOLEON



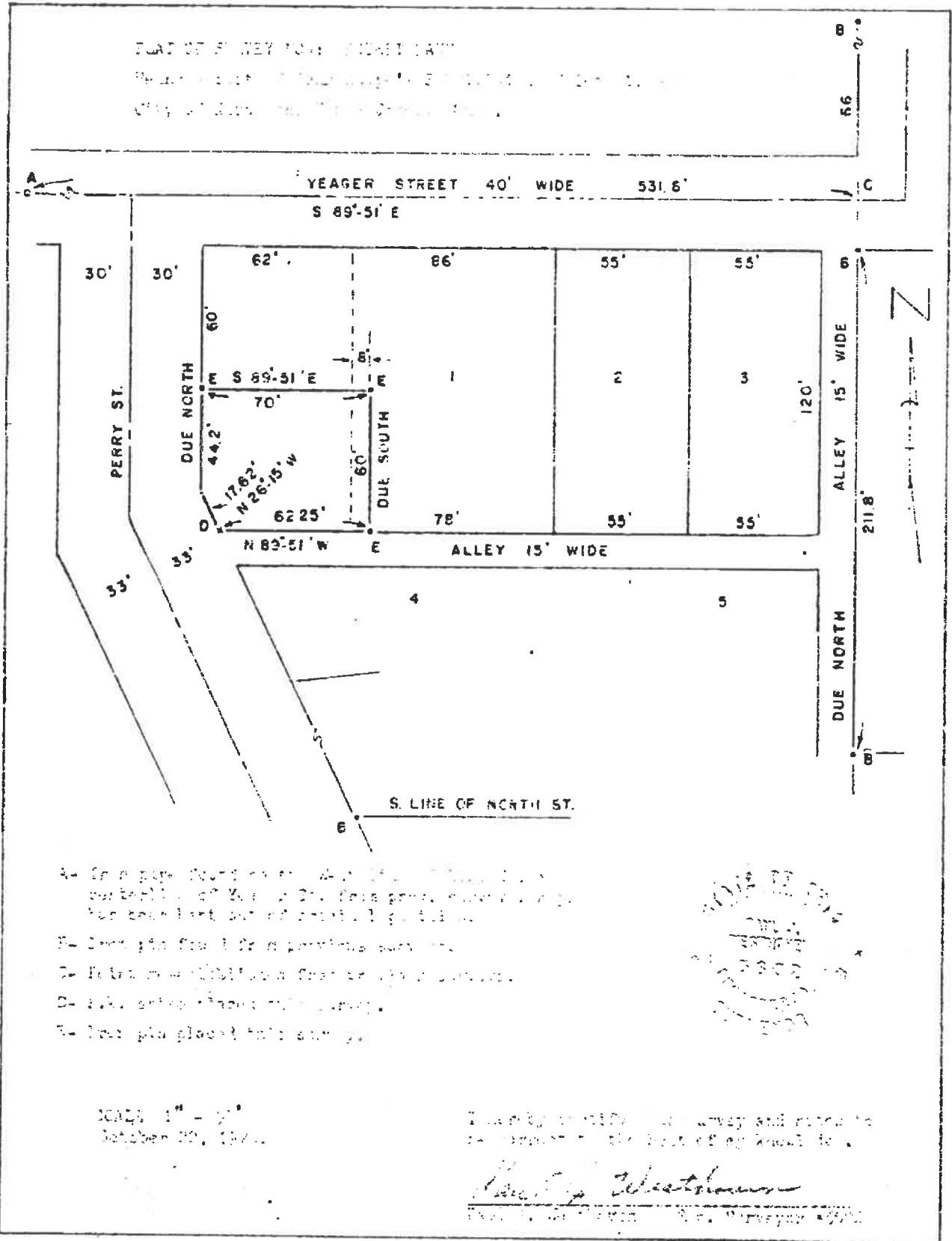
CIRCLES INDICATE RED FIGURES.

SCALE 10 FT = 1 Inch  
W.D. HUDSON C.E.

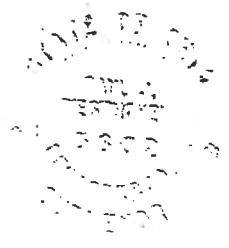
(397)  
 Received for Record at the Recorder's Office of Henry County  
 Ohio, on May 25th, 1896, at 3:23 O'clock P.M. Recorded June 8th,  
 1896.  
 Geo. W. Fisk, Recorder.

For Field Notes see Page 160, Vol. 2.

This above is a true transcription of the foregoing Plat as same appears on Page 161 Vol. 2



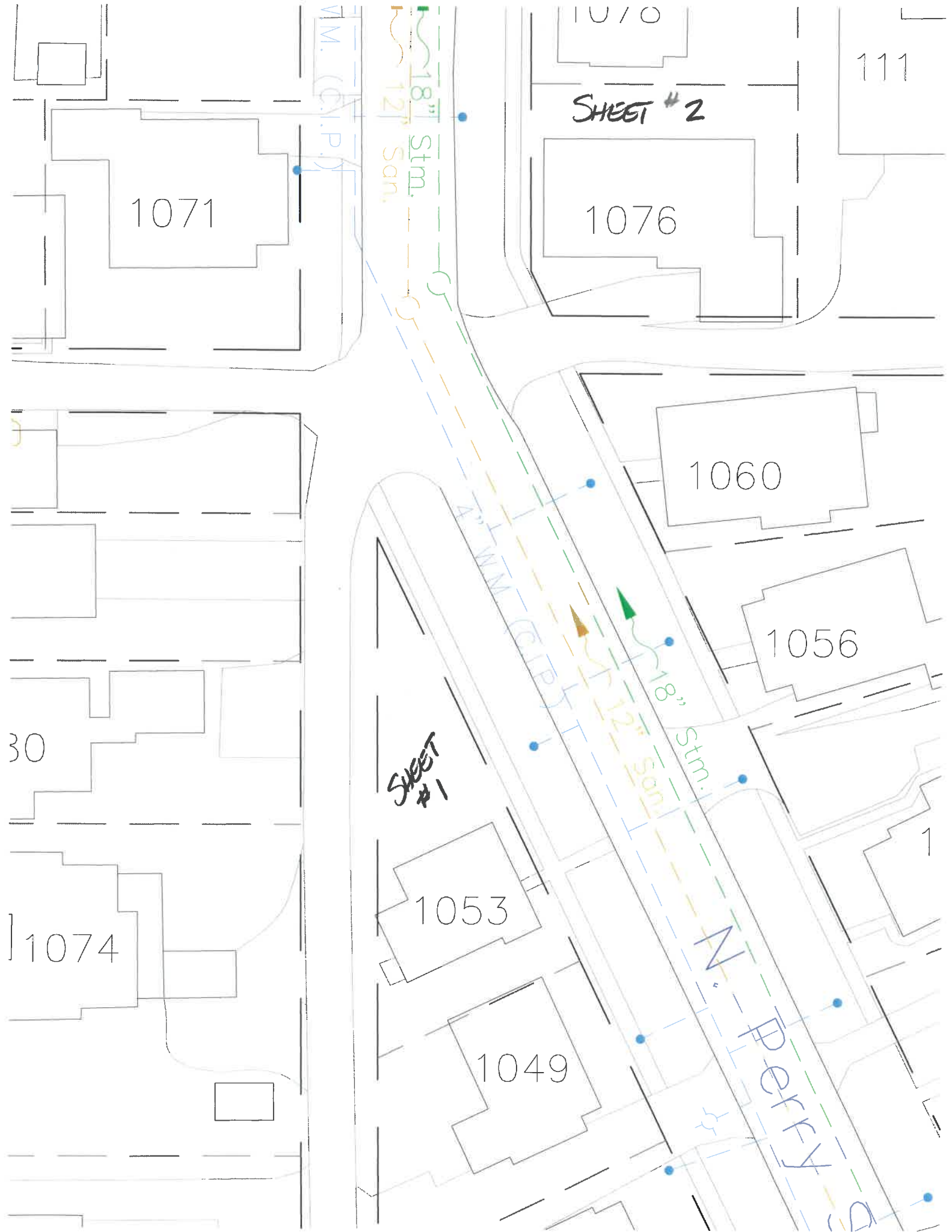
- A- In a pipe found on the lot...
- B- In a pipe found on the lot...
- C- In a pipe found on the lot...
- D- In a pipe found on the lot...
- E- In a pipe found on the lot...



SCALE 1" = 20'  
October 20, 1971

I hereby certify that the survey and plan are correct to the best of my knowledge.

*David J. Westhouse*  
Surveyor



SHEET #2

1071

1076

111

1060

1056

SHEET #1

1053

1049

30

1074

N. Perry

WM. (C.I.P.)

18\" Stm.  
12\" San.

4\" WM (C.I.P.)

18\" Stm.